



**SUSHI**  
S T U D I O

# ABOUT US

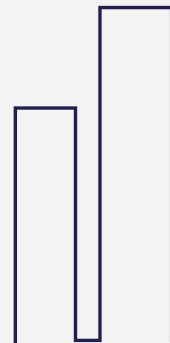
Sushi Studio is specialized in motion design,VFX ,3d animation , interactive and crafting professional experience in any screen.

Our team has over 40 years of cumulative experience members We have been supporting, providing, developing and delivering our clients with several creative solutions to meet their needs and expectations, locally and internationally.

The core of the crew is our valuable asset that speaks legacy of our quality performance.



**SUSHI**  
S T U D I O



## Our Client

## EMEA / Egypt



And many more!

## Our Client

## EMEA / KSA



And many more!



## Our Client

### EME/EU

#### France



#### Germany



#### Tunisia



### EME/GCC

#### UAE



إيدكس IDEX

نافدكس NAVDEX



#### Kuwait



بيت التمويل الكويتي  
Kuwait Finance House

#### Bahrain



CREATIVE & PRODUCTION HOUSE



بنك الإثمار  
Ithmaar Bank



#### Oman



And many more!

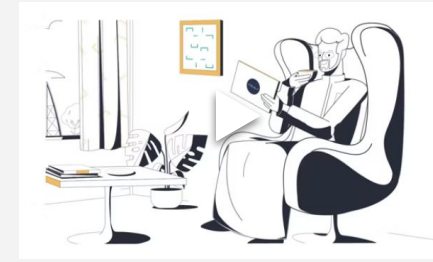
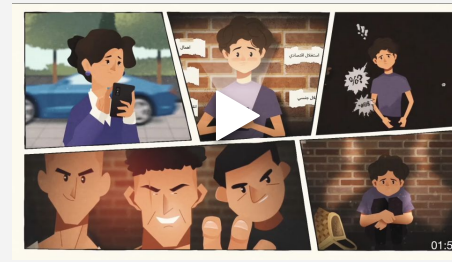
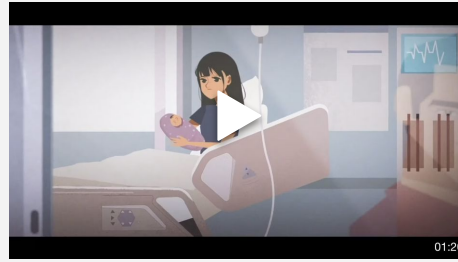
# Motion graphics & Animation

For more information and videos  
<https://www.sushistudio.tv/videos>

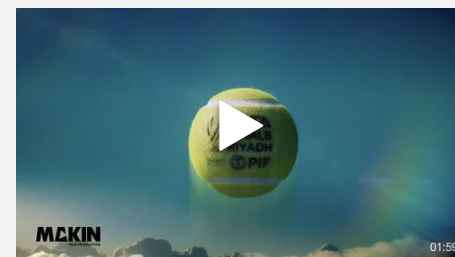
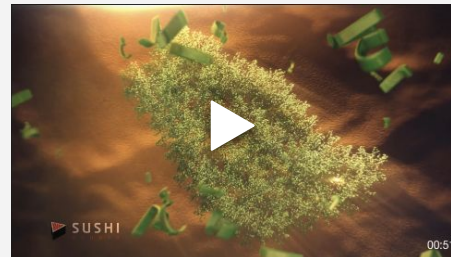
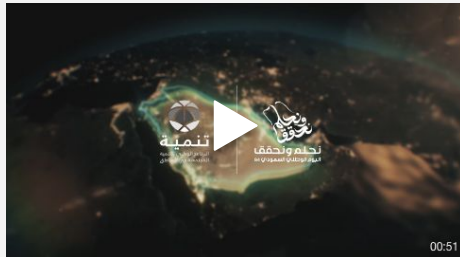


The best animation style for a particular project will depend on the project's goals and target audience. For example, if you are creating an animated movie for children, you might choose a 2D animation style that is bright and colorful. If you are creating an animated video for a corporate training program, you might choose a motion graphics style that is informative and engaging.

## 2D Animation



## 3D Animation



\*click on photo to open the link

# Motion graphics & Animation

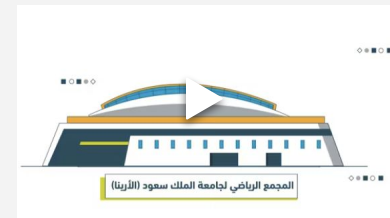
For more information and videos  
<https://www.sushistudio.tv/videos>



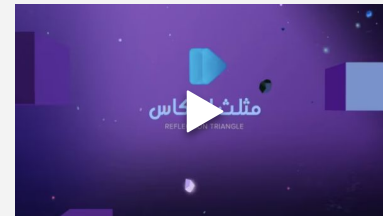
## Collage Animation



## Motion graphics / Kinetic Typography



## 2D&3D Animation



## 2.5 D Animation

## Parallax Style

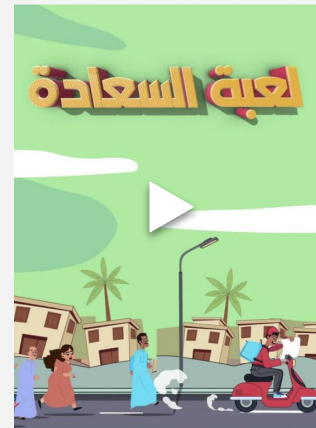
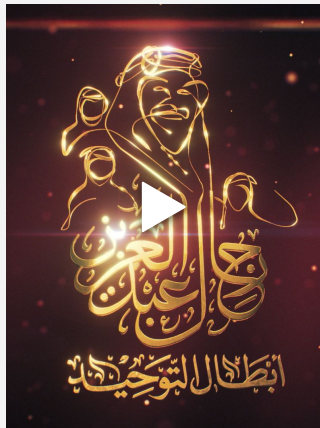
## Isometric Animation

## Ai Style And Ai technique

\*click on photo to open the link

# Open title sequences

For more information and videos  
<https://www.sushistudio.tv/opening-titles>



\*click on photo to open the link





Here are some of the most common types of VFX services:

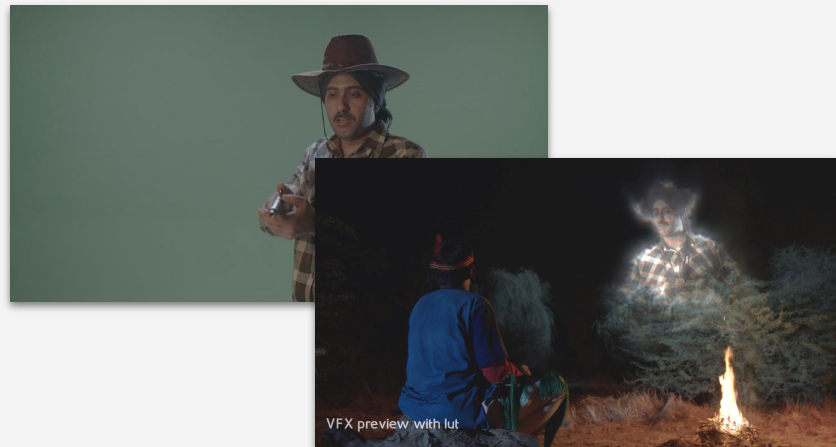
- CGI: Computer-generated imagery is the most common type of VFX. CGI artists use software to create 3D models and animations that can be integrated into live-action footage.
- Matte paintings: Matte paintings are used to create realistic backgrounds or environments that would be difficult or impossible to film in real life.
- Compositing: Compositing is the process of combining different elements of a scene, such as live-action footage, CGI, and matte paintings, to create a single image.
- Particle effects: Particle effects are used to create realistic explosions, fire, smoke, and other atmospheric effects.



[Watch result](#)



[Watch result](#)



[Watch result](#)

# VFX breakdown example from Domino's pizza ad

[Watch result](#)



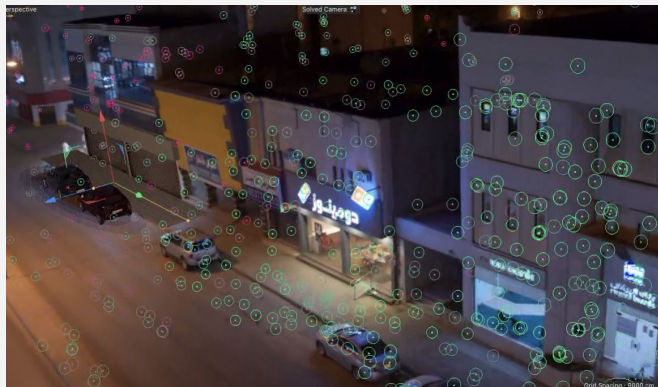
Retouching and replacing shops with 3d one closed shop to focus on the main shop ad Domino's pizza



RAW Footage



3D model & render replacement



3D Tracking



Final Result



# Enhance & up-scale material

## Watch result

- Enhance & Colorize Black & White Footage
- Original resolution 320×240
- we up scale it to 1500 × 1080
- clean and remove dirts, stabilize, color





# Events & special screen specs

## Dome - season 1

The largest program to discover talents in the Middle East in singing, acting, television presentation, plastic arts and playing

**Type :** TV show

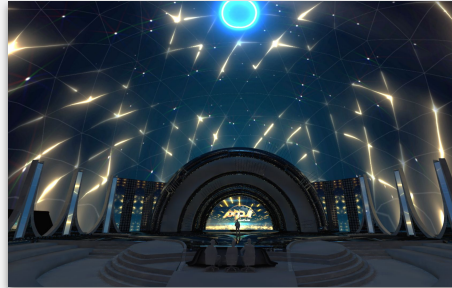
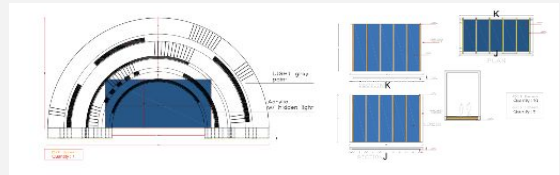
**Technical specs :** 12K video wall resolution  
2K half sphere dome projection  
16 screen side + 3 tunnel screens  
2K arc projection

**Shots :** more than 400 video task and delivered  
for each different screen

**Briefing :** Motion graphic 2D & 3D

**Project duration :** Two month

For more information and videos  
<https://www.sushistudio.tv/special-events>



# Events & special screen specs

## Dome - season 2

The largest program to discover talents in the Middle East in singing, acting, television presentation, plastic arts and playing

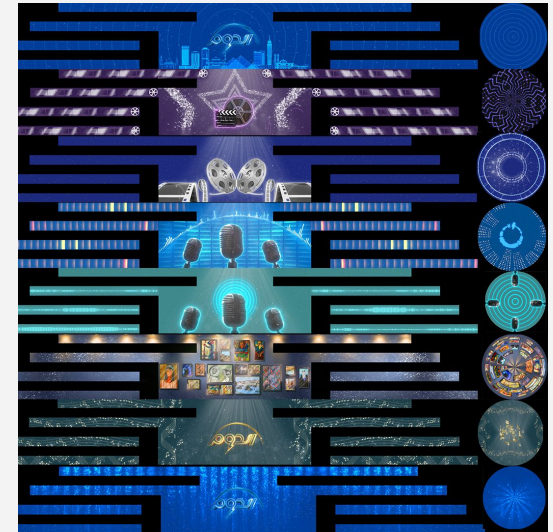
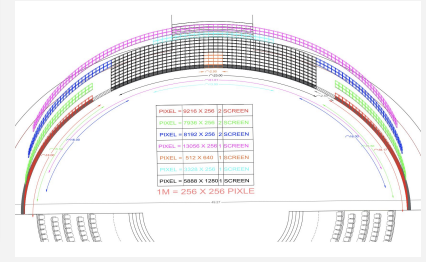
Type : TV show

Technical specs : 12K video wall resolution  
2K half sphere dome projection

Shots : +300 video delivered

Briefing : Motion graphic 2D & 3D

Project duration : Two month



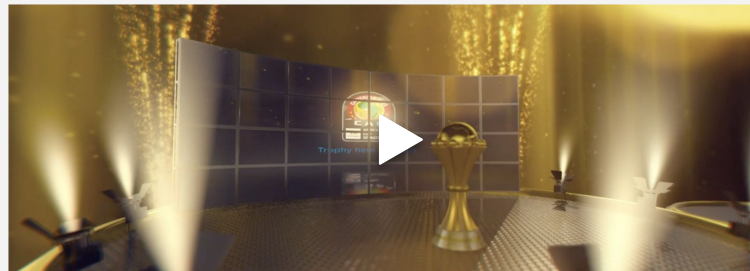
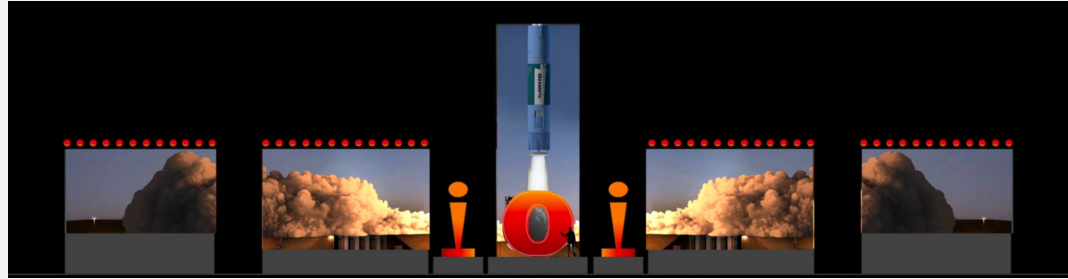
## Events packages video

- Logo animation
- Icons animation videos
- Welcome video
- Background
- Lower third
- Transition
- Website video version
- Welcome Screen
- welcome-looping

For more information and videos  
<https://www.sushistudio.tv/special-events>



## Events Promo video



\*click on photo to open the link



# Interactive

For more information and videos  
<https://www.sushistudio.tv/interactive>

## Touch screen VR AR

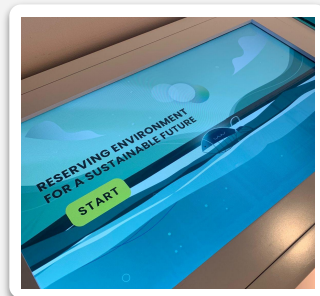
We offer a service for creating interactive graphics that are both visually stunning and engaging.

Our interactive graphics are used by businesses of all sizes to:

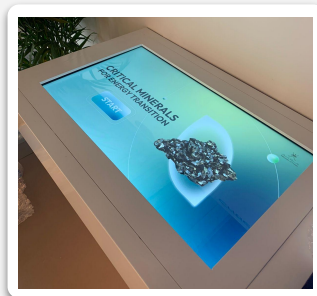
- Explain complex concepts in a clear and concise way
- Engage and interact with customers
- Increase sales and leads

We have a team of experienced graphic designers and developers who can create interactive graphics that meet your specific needs. We also offer a wide range of features and functionality, so you can create graphics that are exactly right for your audience.

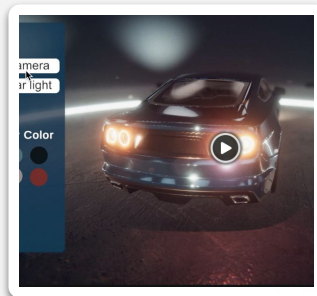
we can help you create interactive graphics that will help you achieve your business goals.



[Watch project](#)



[Watch project](#)



# Interactive

For more information and videos  
<https://www.sushistudio.tv/interactive>

## Touch screen

## VR

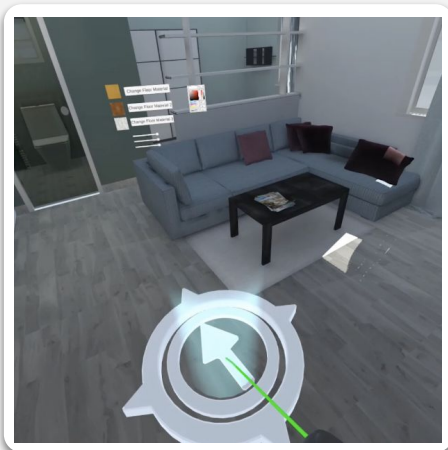
## AR

- Custom AR/VR Development

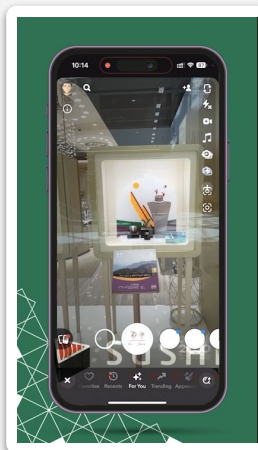
Helping to produce excellent AR / VR applications with image recognition, video transmission, and 3D rendering, extending real-world scenes and delivering user interactive experiences.

- AR/VR Experience Design

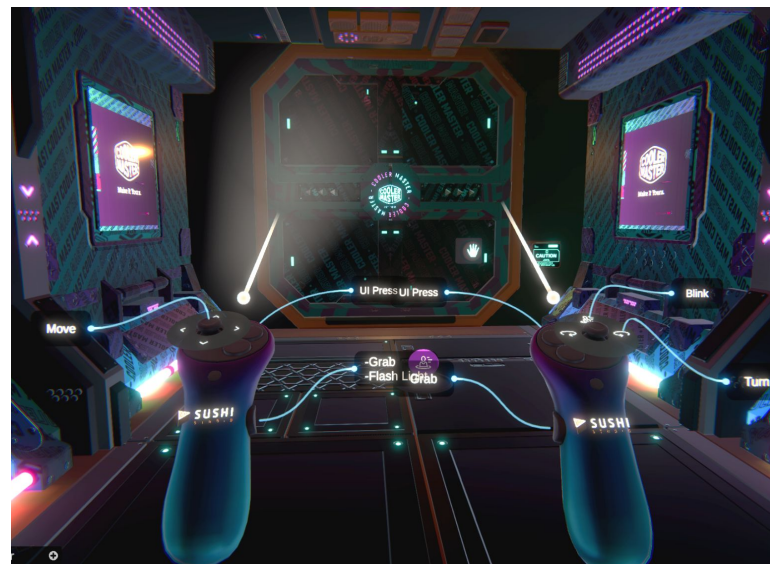
Creating an experience that integrates UX principles, animation, and sound with high-quality content ensures a potent and attractive look for your users.



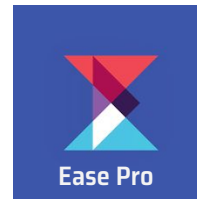
[Watch our VR projects](#)



[Watch our Ar projects](#)



## Interactive Projects



# Workflow

## 01 Development

1. project researches
2. Concept and style references

## 02 Pre production

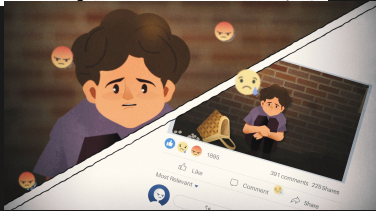
1. Storyboard
2. Draw concept frame
3. Storyboard animatics

## 03 Production

1. Design frames
2. Draw characters poses
3. Characters rigging
4. Background and elements animation
5. Composite layers and finishing animation

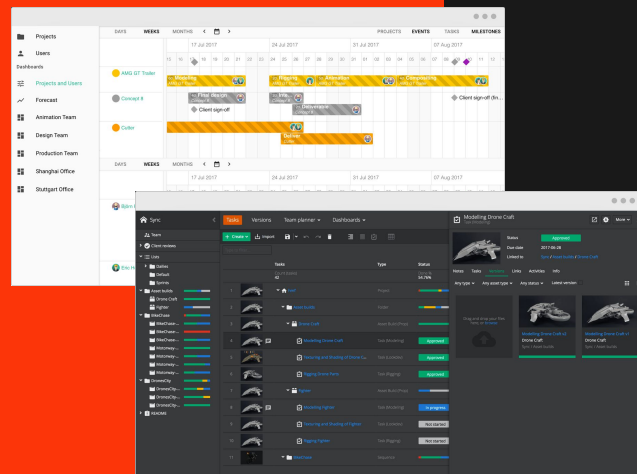
## 04 Post production

1. Shots video editing
2. Sound effects
3. Audio mixing



# Planning & Management

Scalable cloud-based project management solution used in the media & entertainment industry to help teams meet the ever-increasing demands of pre and post production.

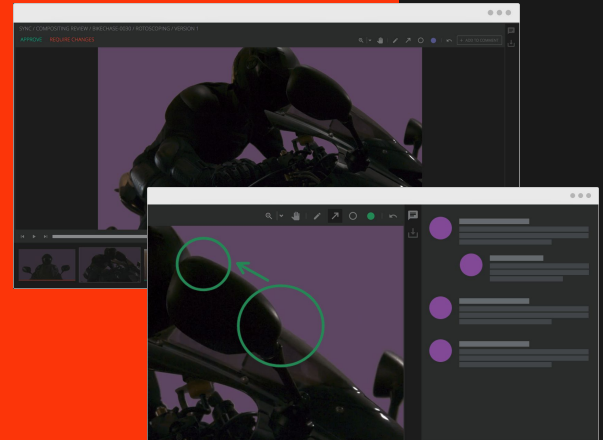




## Review and approvals



Collaborate with us on media reviews using efficient workflows, version management and clear communication to reach the finish line quicker. All review sessions can be exported to PDF with thumbnails, timecodes and notes to achieve clarity of vision.





**SUSHI**  
S T U D I O



# THANKS!

<https://www.sushistudio.tv/>

Phone

Cairo

+20 1000 99 0898

+20 100 159 1133

Riyadh

+966 54 357 7553

Email

[info@sushistudio.tv](mailto:info@sushistudio.tv)

Social Media

